

**LSD Bi-Weekly Resource Planning Meeting  
Agenda**

**11 July 2012**

- Glance Back / 2-Week Look Ahead / Change-Control Board (CCB) Report (10 min) – F. Pilat
- Safety Report (5 min) – M. Logue
- Key Service Provider & Project Lead Reports (25 min)
  - 12GeV Beam Transport/CMs - L. Harwood
  - S&A – C. Curtis
  - Halls – W. Akers
- Special Topic (10 min) – ODH Status Hall B & D Transport Tunnels. Henry Robertson, Harry Fanning
- LSDD handover – Logue to Suhring
- Meeting Recap / Action Items from previous meeting / Parting Shots (5 min) – F. Pilat

# Look back and glance ahead

Fulvia Pilat

LSD Resource Meeting

July 11, 2012

Main activities/issues (no details!):

- **FEL:** running
- **Halls:** de-installation work continues
- **Accelerator:**  
Cryomodule installation and commissioning  
S/R work in the tunnel continues and S/R magnet rework has started  
NL PSS Upgrade for 12 GeV, certifications for new RF zones, etc.  
S&A in SL, BSY, cryomodule fiducialization, etc  
Arc 10 vacuum installation
- **Test Lab:** vacated, demo starts this week. TLA transition in full swing
- **FM&L:** Continuation 40 MVA to 22 MVA tie line
- Issue: **ODH status** of tunnel and tagger area

# Schedule Progress

- Progress to the **end June 2012** was analyzed
- Summary spreadsheet (Schedule Folder → Progress) on **activities** and **resources**

Float less than 22 days; activities planned to start per baseline but did not start (but if had float of >22 days --> no schedule impact)																
	Milestones	1.3.1 Cryomodules	1.3.2 Power Systems	1.3.3 Cryogenics	1.3.4 Beam Transport	1.3.5 Extraction	1.3.6 IC&S	1.5 Hall D	1.6.1.1.3 BSY (Civil)	1.23 Acc Maint	1.24.1 Hall A	1.24.2 Hall B	1.24.3 Hall C	1.26 Conventional Facilities (FML)	1.27 FEL	1.28 ESH&Q
end of May 2012	no issues	CM installation & commissioning has slipped, but plans to be back on track at the end (only has 8 days of float)  girders ahead of schedule	associated RF with CM installation and commissioning (16 days float)	no issues	on schedule or even early for removal activities	delay in some work, but plenty of float	on schedule or even early	delay in some work, but plenty of float	behind, but plenty of float	no issues	behind, but plenty of float	HDI/Ce removal moved out a little - but no major impacts	Decommissioning and removal of QWeak (1.24.3.7) --> BUT need info from 12GeV Hall C as the float is relative to end of 6GeV Hall C De-installation work.	40MVA to 22MVA line looks good  Headers and setting of tower - need to look at logic for header work.  CHL#1 cooling tower submittals behind  HVAC roof design one month behind but shortened construction duration to make up  Tunnel penetration design specs design but shortened procurement cycle & submittal review	Changes made in progress sheet for Admiral WBS - needs a CR to clean up because its delayed 2 months (but has float)	no issues
end of June 2012	waiting on Test lab milestones from sperlazza	no issues	no issues	no issues	no issues	no issues	no issues	a little behind, but has float	no issues	no issues	a little behind, but has float	a little behind, but has float	a little behind (~3 weeks), but plenty of float	a little behind (counting house reno, MCC HVAC roof), but plenty of float  Tunnel penetrations: behind schedule and no float (waveguide penetrations has a finish on or before 31 aug).	no issues	no issues

	S&A	12GeV & 5/R Removal: Mech Inst, Vac, Meas Tech	Other: Mech Inst, Vac, Meas Tech	Safety Systems	RadCon Tech	ICD Elec Tech	ICD Elec Eng	Electrician	DC Elec Tech	DC Elec Eng	RF Elec Tech	RF Elec Eng
end of May 2012	9/12/12: (UF = 1.6) Q1 alignment for hookup for 12GeV & CM Shuffle for 6GeV Ops  9/28:12 (UF=1.14) OL/OR 12GeV bolt marking; Hall D network survey; ES stand alignment	week of 9/5/12 (UF=1.2)  9/18/12 - 9/28/12 (UF=1.2 to 1.3)  group leader working on CR for smoothing	no issues	no issues	no issues	no issues	no issues	no issues	8/30/12 - 9/30/12: (UF= 1.16) 12GeV Magnet Power & Hall B Cable Removal  UF only 1.16 but resources have limited low areas to move work around. Group leader is aware of this scope/resources as it is his scope and his resources (we saw this at baseline review)	no issues	no issues	no issues
end of June 2012	7/2/11: UF = 2 but there are plenty of low areas for the following weeks and months.	no issues	no issues	no issues	7/2/11: UF = 1.5 but some low areas for the following weeks and months	no issues	no issues	7/2/11: UF = 1.2 but there are plenty of low areas for the following weeks and months.	8/30/12 - 9/30/12: (UF= 1.16) 12GeV Magnet Power & Hall B Cable Removal  UF only 1.16 but resources have limited low areas to move work around. Group leader is aware of this scope/resources as it is his scope and his resources (we saw this at baseline review)	no issues	no issues	no issues

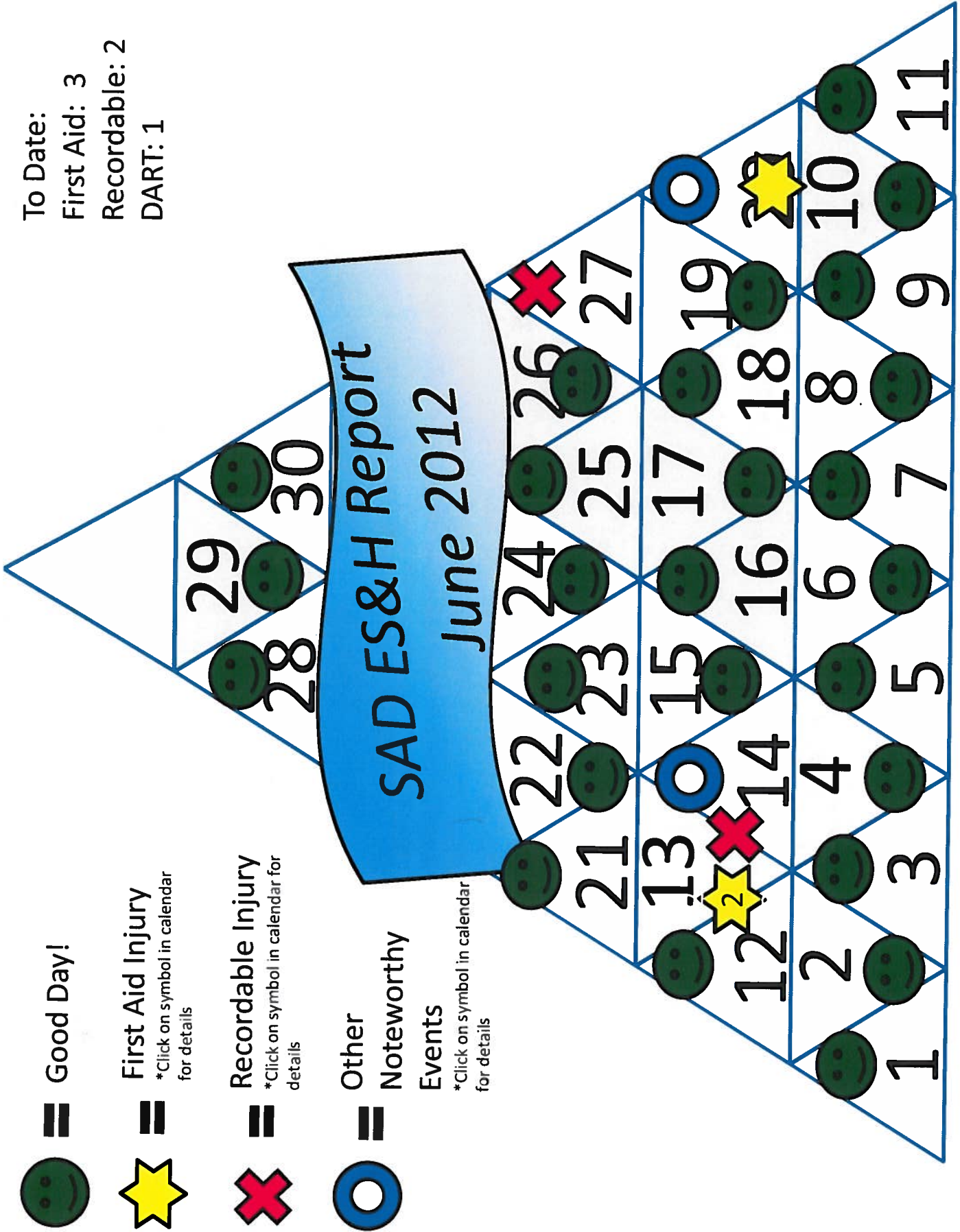
# NTF/Change Requests

- ✓ **FEL Admiral & run schedule** (B. Legg) – CR reviewed at LSD CCB meeting 28 June approved - implemented in schedule.
- **Transfer Line Alignment during warm-up** (W. Oren) – (From Wed 1330 6<sup>th</sup> June Mtg). CR reviewed at LSD CCB meeting 28 June – follow up analysis being done **23<sup>rd</sup> July** mtg.
- **12GeV Beam Transport mech & align tech profile smoothing** (M. Bevins/L. Harwood) – page 1 will be submitted after progress collected for June 2012
- **12 GeV ACC RF Circulator Swaps** (L. Harwood) - (From Wed 1330 6<sup>th</sup> June Mtg & pending funding)
- **CR for ODH requirements NL/Tagger** – Discussions on-going
- 12GeV **Hall C** Schedule Implementation (H. Fenker/G. Young) **August** Review
- 12GeV **Hall B** Schedule Implementation (Latifa/G. Young) - ? Review

# 8 weeks look ahead

- **CHL-1 warm up** begins August 1, ends Aug 15 (end of **C100 testing**, **FEL run**)
- **CHL-1 cooling towers** (August)
- **Counting house** renovation starts, waveguide **penetrations**
- Re-commissioning **CTF** (beginning September?), **X-fer lines** modifications
- **Test Lab** demolition
- **S/R** and **Arc** magnets rework, start **stands** installation
- Commissioning **CM-10** in NL26, **R100** shuffle
- **Hall A, B and C** continue de-installation
- **Hall D** continues installation

To Date:  
 First Aid: 3  
 Recordable: 2  
 DART: 1



= Good Day!

= First Aid Injury  
 \*Click on symbol in calendar for details

= Recordable Injury  
 \*Click on symbol in calendar for details





= Other Noteworthy Events  
 \*Click on symbol in calendar for details










# June 2012 Events

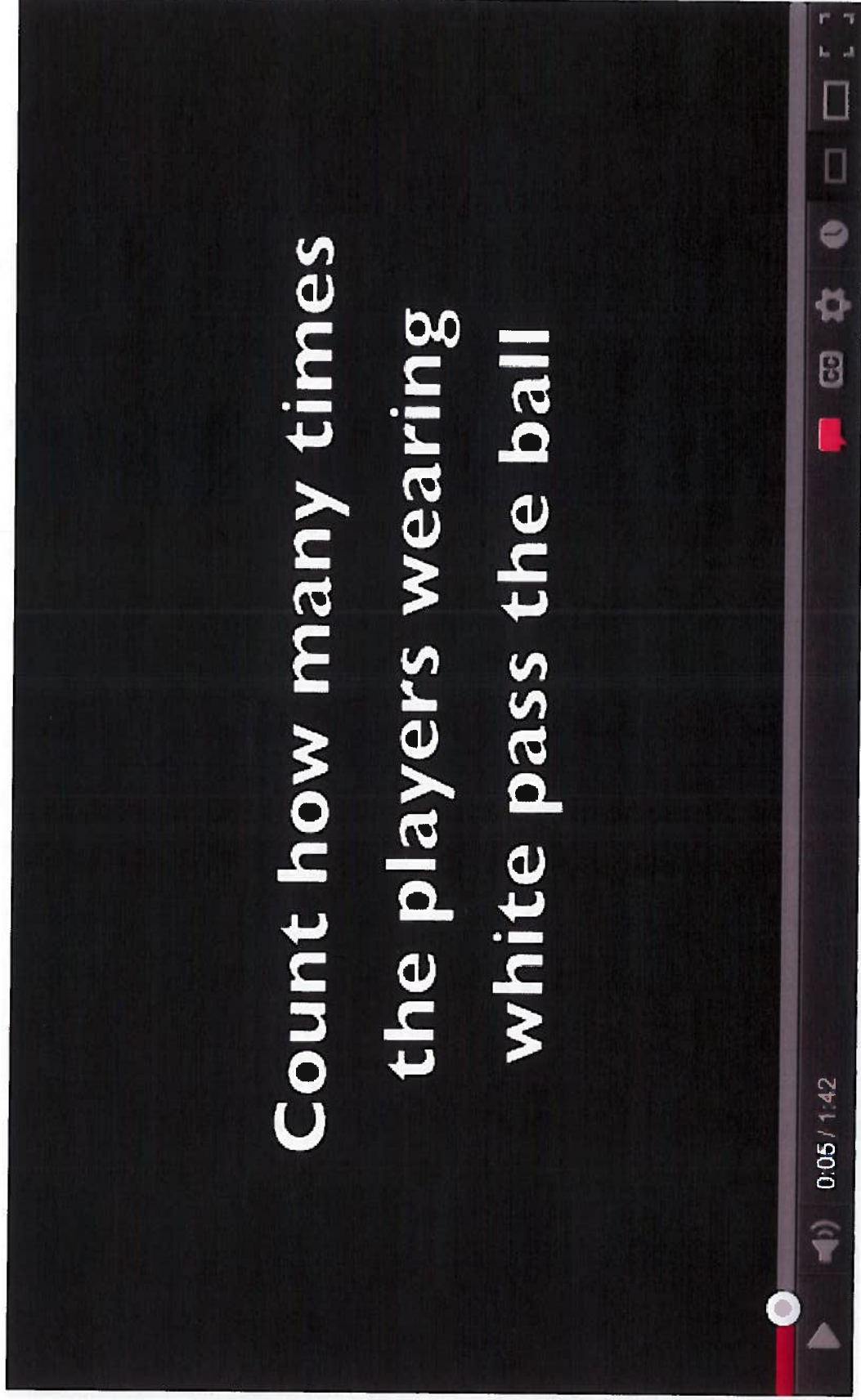
	Date	Location	Event
	06/13/2012	Test Lab T-Trench area	Employee was using a drill to screw angled plastic strips backed with weather stripping to the tools in order to seal the gap between the cleanroom wall and the process tools. Employee was diagnosed with tennis elbow and placed on restricted duty.
	06/13/2012	Experimental Staging Building	Employee stated "While assisting with lowering a load, I adjusted the wooden cribbing for the load and received a splinter in my finger." Employee was diagnosed with a splinter to right index finger. The splinter was removed, the finger was cleansed and examined. Occupational Medicine then applied over the counter antibiotic ointment and band-aid. Employee has returned to work , regular duty.
	6/13/2012	Hall B	Employee reported frequent use of wire cutters has caused hand discomfort.
	06/14/2012	Behind the Test Lab Addition	Last Thursday morning a rupture disk on the LN2 tank outside of the Test Lab burst. No personnel were exposed. This tank valves were tested and both passed. As a precautionary measure, the valves and the disks are being replaced.

# June 2012 Events

	Date	Location	Event
	06/20/2012	Building 36	An unauthorized 208 volt, 30 Amp 4 wire cable with a male plug at one end and exposed wires (pigtail) at the other end, had been left plugged into a de-energized power source on the evening of June 19, 2012. Lock Tag & Try was not applied to power source before leaving for the evening. At approximately 10:00 am the following morning, an operator turned on the power supply, and the exposed wires arced and shorted, opening the breaker to the power supply and the electrical panel that fed it.
	06/20/2012	East ARC 2 Service Building #	Employee called to report that they were stung on his right elbow by a wasp. No treatment rendered and the employee returned to work regular duty.
	06/27/2012	CHL 2	Employee was installing a standard chain wheel kit on one of the transfer lines behind Building 8. As he was removing a bolt, the bolt broke, causing the ratchet to slip and hit the contractor in his tooth. The contractor's right incisor was chipped.

[http://www.youtube.com/watch?v=IGQmdoKZfY&feature=player\\_detailpage](http://www.youtube.com/watch?v=IGQmdoKZfY&feature=player_detailpage)

Count how many times  
the players wearing  
white pass the ball



# Shutdown Work Summary

**Organization:** 12 GeV Accelerator

**Name:** Harwood

**Date:** 7/11/12

## Last Two Weeks

### Work That Went Better Than Expected:

- BT de-installation

### Work That Went Slower Than Expected, Delays, and Issues:

- Dipole machining

## Ongoing Shutdown Work

**Upcoming Work (3-6 weeks from now)** ( green = no concerns; yellow = some concerns; red = serious concerns)

Project	Tasks	Status	On Schedule?	Comments/Concerns
Cryomodules	Finish commissioning of SL22	X <span style="background-color: #fff2cc;">yellow</span> <span style="background-color: #f4cccc;">red</span>	Y	
Power	Pull/terminate cables where possible	X <span style="background-color: #fff2cc;">yellow</span> <span style="background-color: #f4cccc;">red</span>	Y	
	Tune LLRF in SL22	X <span style="background-color: #fff2cc;">yellow</span> <span style="background-color: #f4cccc;">red</span>	Y	
Cryogenics	Vendors continue hookup of CHL2 major components	X <span style="background-color: #fff2cc;">yellow</span> <span style="background-color: #f4cccc;">red</span>	Slightly behind	
	Continue fab and install of HDR	X <span style="background-color: #fff2cc;">yellow</span> <span style="background-color: #f4cccc;">red</span>	Y	
Beam Transport	OL/OR rework	X <span style="background-color: #fff2cc;">yellow</span> <span style="background-color: #f4cccc;">red</span>	Ahead	Some ahead, some behind
	Continue dipole and girder rework	X <span style="background-color: #fff2cc;">yellow</span> <span style="background-color: #f4cccc;">red</span>	Y	
	TR removal	X <span style="background-color: #fff2cc;">yellow</span> <span style="background-color: #f4cccc;">red</span>	Ahead	
	Finish 3A	X <span style="background-color: #fff2cc;">yellow</span> <span style="background-color: #f4cccc;">red</span>	Y	
	Tagger dump	X <span style="background-color: #fff2cc;">yellow</span> <span style="background-color: #f4cccc;">red</span>	Ahead	
	Start S/R stand installation	X <span style="background-color: #fff2cc;">yellow</span> <span style="background-color: #f4cccc;">red</span>	Y	
I&C/Safety	Continue upgrade to NL PSS	X <span style="background-color: #fff2cc;">yellow</span> <span style="background-color: #f4cccc;">red</span>	Y	
	Continue fab of diagnostics	X <span style="background-color: #fff2cc;">yellow</span> <span style="background-color: #f4cccc;">red</span>	Y	

**Schedule Changes:**

- Further BT adjustments to keep work centers busy
- Adjustments may be necessary to stay inside budget box. TBD

**Scope Changes:**

- Circulator swaps (details TBD)

**Significant Problems Pending (delays, technical issues, resource issues, scheduling):**

- None....yet. Some concern about S/A support in September and later.

**Staffing Outlook:**

- Looks OK



# Shutdown Work Summary

**Organization:** Alignment

**Name:** Chris Curtis

**Date:** 11 July, 2012

## Last Two Weeks

---

### Work That Went Better Than / As Expected:

- C100-6 fiducialization completed.
- Hall B CTOF light guide inspections completed.
- Accelerator network survey mostly complete in main ring and BSY. Injector and Line D ongoing.

### Work That Went Slower Than Expected, Delays, and Issues:

## Ongoing Shutdown Work

---

**Upcoming Work (3-6 weeks from now)** ( green = no concerns; yellow = some concerns; red = serious concerns)

Project	Status	On Schedule?	Tasks	Comments/Concerns
12 Gev Accel	x <span style="background-color: #d9ead3;"> </span> <span style="background-color: #fff2cc;"> </span> <span style="background-color: #f2dede;"> </span>	Started 18 Jun	Full re-survey of all monuments in the accelerator.	Mostly complete.
Hall C – Q Weak	x <span style="background-color: #d9ead3;"> </span> <span style="background-color: #fff2cc;"> </span> <span style="background-color: #f2dede;"> </span>	Started 21 Jun	Tungsten plug & collimator as-found surveys	Later this week
12 Gev S/R	x <span style="background-color: #d9ead3;"> </span> <span style="background-color: #fff2cc;"> </span> <span style="background-color: #f2dede;"> </span>	Later than sched.	Layout bolt locations of stands	Data available, layout next week?
12 Gev Arcs	x <span style="background-color: #d9ead3;"> </span> <span style="background-color: #fff2cc;"> </span> <span style="background-color: #f2dede;"> </span>	Later than sched.	“Rough” alignment of west arc.	Working on ideal data.
12 Gev Accel	x <span style="background-color: #d9ead3;"> </span> <span style="background-color: #fff2cc;"> </span> <span style="background-color: #f2dede;"> </span>	July	R100 / OL04 cryomodule shuffle	Plan developed. Starts this week.
12 Gev Linacs	x <span style="background-color: #d9ead3;"> </span> <span style="background-color: #fff2cc;"> </span> <span style="background-color: #f2dede;"> </span>	August	Initial (2A) alignment	

**New Work Requests Requiring Schedule Changes:**

- 

**Significant Problems Pending (delays, technical issues, resource issues, scheduling):**

- 

**Staffing Outlook:**

- OK.



# Shutdown Work Summary

**Organization:** Hall A

**Name:** Folts

**Date:** 7/11/12

## Last Two Weeks

---

### Work That Went Better Than Expected:

- Removal of the Polarized target

### Work That Went Slower Than Expected, Delays, and Issues:

- Upside down girder
- Moller installation due to parts

## Ongoing Shutdown Work

---

**Upcoming Work (3-6 weeks from now)** ( green = no concerns; yellow = some concerns; red = serious concerns)

Project	Status	On Schedule?	Tasks	Comments/Concerns
Moller Polarimeter	<span style="background-color: #d9ead3;">X</span> <span style="background-color: #fff2cc;">X</span> <span style="background-color: #f4cccc;">X</span>	no	As per schedule	Hold for parts
Remove G2P	<span style="background-color: #d9ead3;">X</span> <span style="background-color: #fff2cc;">X</span> <span style="background-color: #f4cccc;">X</span>	yes	As per schedule	none
Cryo Work	<span style="background-color: #d9ead3;">X</span> <span style="background-color: #fff2cc;">X</span> <span style="background-color: #f4cccc;">X</span>	yes	As per schedule	none
Upside down girder	<span style="background-color: #d9ead3;">X</span> <span style="background-color: #fff2cc;">X</span> <span style="background-color: #f4cccc;">X</span>	no	Install girder and align	Leak check, install and align

### New Work Requests Requiring Schedule Changes:

- none

### Significant Problems Pending (delays, technical issues, resource issues, scheduling):

- Moller Polarimeter parts

### Staffing Outlook:

- Peachy

# Shutdown Work Summary

**Organization:** Hall B

**Name:** Tilles

**Date:** 7-11-2012

## Last Two Weeks

---

### Work That Went Better Than Expected:

- Removing of the Delay cables on all Carriages
- HDice transfer to Production Dewar and transport to Lab
- Removal of Clam Shell electronic Racks
- Gas System removal
- Splitting CLAS
- Panel 4 TOF removal
- Warm up of CLAS Torus magnet

### Work That Went Slower Than Expected, Delays, and Issues:

- Transport of delay cables to dumpsters, and crane OP's due to lack of staff.

## Ongoing Shutdown Work

---

**Upcoming Work (3-6 weeks from now)** ( green = no concerns; yellow = some concerns; red = serious concerns)

Project	Status	On Schedule?	Tasks	Comments/Concerns
*HDice removal	x <span style="background-color: #d9ead3;"> </span> <span style="background-color: #fff2cc;"> </span> <span style="background-color: #f4cccc;"> </span>	Yes	Complete	All went as planned
*Delay cable removal	x <span style="background-color: #d9ead3;"> </span> <span style="background-color: #fff2cc;"> </span> <span style="background-color: #f4cccc;"> </span>	Yes	On going	

Project	Status	On Schedule?	Tasks	Comments/Concerns
*Removal of Electronics and racks	x	Yes	On going	
*Splitting CLAS	x	No Fwd. carriage not ready to move Due to cabling removal	On going	FWD. Carriage Move 7/10/2012
*Panel 4 TOF Removal	x	Yes		
*C^ detector removal	x	Yes		
* Panel 1 TOF removal	x	Yes		

**New Work Requests Requiring Schedule Changes:**

- Removal of Fwd. Carriage Electronics
- 12GeV support out-side of the Hall requiring manpower
- Load testing of 12 GeV Pcal windows **Compleat**

**Significant Problems Pending (delays, technical issues, resource issues, scheduling):**

**Staffing Outlook:**

- No change

# Shutdown Work Summary

**Organization:** Hall C

**Name:** Walter Kellner

**Date:** 07-10-12

## Last Two Weeks

---

**Work That Went Better Than Expected:**

**Work That Went Slower Than Expected, Delays, and Issues:**

## Ongoing Shutdown Work

---

**Upcoming Work (3-6 weeks from now)** ( green = no concerns; yellow = some concerns; red = serious concerns)

Project	Status	On Schedule?	Tasks	Comments/Concerns
Q-weak disassembly	x <span style="background-color: #d4edda;">green</span> <span style="background-color: #fff3cd;">yellow</span> <span style="background-color: #f8d7da;">red</span>	y	Region III shielding removal	In progress
Q-weak disassembly	x <span style="background-color: #d4edda;">green</span> <span style="background-color: #fff3cd;">yellow</span> <span style="background-color: #f8d7da;">red</span>	y	Disconnect and remove Target	In progress
Q-weak disassembly	x <span style="background-color: #d4edda;">green</span> <span style="background-color: #fff3cd;">yellow</span> <span style="background-color: #f8d7da;">red</span>	y	Disassemble and removal of the region III main detector frame, rotator and concrete collimator	In progress, on schedule

**New Work Requests Requiring Schedule Changes:**

- 

**Significant Problems Pending (delays, technical issues, resource issues, scheduling):**

- 

**Staffing Outlook:**

-

# Shutdown Work Summary

**Organization:** Hall D

**Name:** Tom Carstens

**Date:** 11 July 2012

## Last Two Weeks

---

### Work That Went Better Than Expected:

- 

### Work That Went Slower Than Expected, Delays, and Issues:

- 

## Ongoing Shutdown Work

---

Install Pick-up Coils in Bore of Solenoid

Continue Building Solenoid Controls Rack

Continue building Solenoid Controls cabling

Continue to install Solenoid Cladding

Assemble BCAL gluing booth

Bonding Upstream Platform

Install electrical power for Solenoid power supply

**Upcoming Work (3-6 weeks from now)** ( green = no concerns; yellow = some concerns; red = serious concerns)

Project	Status	On Schedule?	Tasks	Comments/Concerns
Paint Solenoid	X	<span style="background-color: #d4edda;">green</span> <span style="background-color: #fff3cd;">yellow</span> <span style="background-color: #f8d7da;">red</span>		

Project	Status	On Schedule?	Tasks	Comments/Concerns
Install Tagger stands	X			
Assemble tagger magnet gantry crane	X			
Assemble FCAL Platform	X		45 days behind, just receiving platform components	No effect to overall schedule
Install Power to rack in Rack Room of Counting House	X			Man power could be an issue. Back-up place is to use JLAB electricians if need be.
Install Pair Spectrometer Magnet onto platform	X		45 days behind, mounting hardware just placed on order	No effect to overall schedule
Start of gluing/testing BCAL light guides (3840 total)	X		30 days behind scheduled start date	Delivery of light guides delayed/Modified fixturing still untested meaning 12 weeks installation time is "best guess".

**New Work Requests Requiring Schedule Changes:**

- None

**Significant Problems Pending (delays, technical issues, resource issues, scheduling):**

- None ATT

**Staffing Outlook:**

- Adequate

# **ODH Status**

## **Hall B & D Transport Tunnels**

Harry Fanning ACC DSO

Henry Robertson ENG DSO (in Absentia)



# Background

- An ODH assessment was made of the Hall D Tagger Transport Tunnel based on the addition of a Helium gas line.
- Various areas within Tagger Transport & Tagger area were noted as being ODH-1 given the data on hand.
- Further evaluation noted that ODH concerns were not only from the He gas line, but also stemmed from the North LINAC.
- Questions were lodged about differences of Hall D versus Hall B, and the differences were not so different.
- While Hall D was being addressed, further evaluation was needed for the Hall B questions.

# Current Status

## Hall B

- Engineering Group – Cryo evaluation of Hall B transport tunnel area needs underway.
- SSG - Evaluation of ODH requirements as per Cryo for future monitoring needs.

## Hall D

- SSG – Existing Alarms (Horns & Beacons) from North LINAC extended into the Hall D Transport Tunnel.
- SSG – Portable ODH Monitor placed at top of Hall D Transport Tunnel.
- Installation – SEG Wall at Hall D Tagger area scheduled to be removed by COB this Friday.
- ACC & Engineering – Feasibility Study of adding Exhaust

# Path Forward

## Hall B

- Engineering – Re-evaluating ODH concerns/needs at Hall B Tagger Transport Tunnel.
- SSG – Working toward extension of South LIANC ODH Alarm up to the BSY Gate.
- SSG – Working on Plan to add additional monitoring within the BSY up to the Hall B Tagger Entrance.

## Hall D

- Engineering – Re-evaluating ODH concerns/needs of Tagger area based on Permanent Configuration.
- SSG – Working toward adding ODH monitoring within Tagger enclosure with additional monitors within the Tagger Support Building based on ODH re-evaluation.

# Questions ?

## **Henry Robertson**

- Office: 269-7285
- Cell: 327-6515

## **Harry Fanning**

- Office: 269-7619
- Cell: 768-9019